



HOUSE RULES +

# WASTE MANAGEMENT AND SOURCE SEPARATION REQUIREMENTS FOR ALL SITE USERS

Dear Site User,

Our centre is implementing best practice waste management procedures that are designed to ensure compliance and demonstrate our stewardship with regards to achieving best environmental outcomes. Please support our waste segregation plan to help us protect the environment and achieve our sustainability goals.

**DON'T WASTE**

recycle. save. comply. educate



To transparently measure, record, and monitor our waste processes and data, including our environmental footprint and legal compliance.



To reduce the waste volumes sent to landfill and strive for ZERO waste to landfill.



To increase the volume of waste recovered for recycling through the implementation of source separation, and to find the best treatment options for waste materials previously destined for landfill.



MOST PREFERRED  
RECYCLING



NEXT PREFERRED  
ENERGY  
RECOVERY



LAST PREFERRED  
DISPOSAL

## SOURCE SEGREGATION IS CRITICAL TO OUR SUCCESS.

As our site user, you play a central role in helping our premises meet our current objectives by taking responsibility for the segregation of waste per the plan. Separating waste is essential as it prevents the contamination of recyclable material, and allows us to send food waste to anaerobic digestion and to recover our primary recyclables.

Please support our waste strategy as we work together to create a sustainable future.



Please segregate your waste as per the plan outlined below:



## Dry mixed recycling

**Place all dry mixed recycling in the relevant labelled bin.**

This includes plastic bottles, empty cans and food tins, clean food packaging and cartons, magazines and catalogues, small size paper and envelopes, bubble wrap and cling film.

Collection: PIT Area - Monday



## Mixed Glass

**Place all mixed glass in the blue labelled bin, with no plastic bags.** This includes clear and coloured glass, glass dishes and broken glass. Please no crockery or lids or tops.

Collection: PIT Area - Tuesday



## Food waste

**Place all food waste in the relevant labelled bin.**

Please use clear plastic bags only. This includes all food waste. Fruit and vegetables, meat, fish, bones, dairy, teabags, coffee grounds, leftovers, scraps and food discards. Please, no packaging in this waste stream.

Collection: Main kitchen area - Wednesday



## Cardboard

**Place all clean flattened cardboard in the yellow labelled bin.**

This includes brown corrugated card, boxes and grey packaging. Please do not put any paper, envelopes, or magazines in this bin. Also no coffee cups or food packaging.

Collection: PIT Area - Friday



## General waste

**Place all other general waste in the red labelled bin.** This includes all other non-segregated waste such as mixed or contaminated packaging, polystyrene, plastic bags, tissues and wipes, disposable cutlery and drinking cups.

Please segregate your waste as per the plan outlined below:



## Bulky general waste

**Please place all general bulky waste in the relevant skip.**  
This includes all construction waste, carpet and hard plastic.



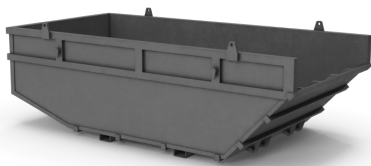
## Mixed metals

**Please place all metal scrap in the relevant skip.**  
This includes all mixed metals.



## Mixed wood

**Please place all wood scrap in the relevant skip.**  
This includes all pallets and wood scrap.



Please ensure the waste grades are placed in the correct skip in the service yard.

Collection: Pit Area - on request.



## Please take note:

- There will be large signs allocated above the bins and skips for everyone to see.
- We can book more bins for scheduled collection during busy periods.
- Please make sure bins are in correct collection points otherwise they won't be emptied
- Please use clear plastic bags only. We have a no black plastic bag policy at Harrogate Convention Centre for waste & recycling and security reasons.



## WASTE RECYCLING GUIDE

### Waste collection points:

- Main kitchen (back of Hall D) – Food Waste
- PIT area – Glass, Dry Mix Recycling, General Waste, Cardboard, Metal Skip, General Waste (Bulky) Skip, Wood Skip.

### Scheduled collections taking place at the following days

- Monday – Dry Mixed Recycling
- Tuesday – Glass
- Wednesday – Food Waste
- Friday – cardboard



## HAZARDOUS OR SPECIAL WASTES

Hazardous or special wastes must not be mixed with non-hazardous waste or with different hazardous waste streams - this is a legal requirement. Hazardous or special waste include but are not limited to:



WASTE BATTERIES, FLUORESCENT TUBES, WASTE ELECTRICAL AND ELECTRONIC EQUIPMENT



WASTE OIL, INTERCEPTOR WASTE, PAINTS, SOLVENTS, POISONS.



EMPTY OIL/PAINT/CHEMICAL CONTAINERS/GAS CANISTERS








USED SPILL KITS

**Please contact management for the removal of these items, or place in the designated bins, if provided.**

Old or broken Fluorescent Tubes can be swapped for new with the maintenance department – please do not put in general waste. Try to keep Tubes intact, and in the original box. Mercury vapour is released when they are broken. Site users will be held accountable for mismanaged hazardous waste as it has negative impacts on the environment. Hazardous waste is strictly regulated and carries severe penalties if it is not safely disposed of. Centres are required to maintain records of safe disposal of any hazardous waste.



# WE ARE OBLIGATED TO

-  Identify and classify our waste and do everything reasonable and do everything reasonable to avoid, reuse, recycle or recover waste minimising environmental impacts and disposing as a last resort.
-  Ensure recoverable streams are segregated and diverted from Landfill.
-  Sort and store waste safely and separately if required ensuring no public nuisance, health or environmental hazard is caused.
-  Account for and record all waste loads that leave the premises.
-  Ensure waste carriers are legally compliant and that the waste is taken to permitted treatment or disposal sites.

Our management plan addresses all these areas. Our centre places high importance on protecting the environment and operating sustainably. The good news is that everyone can help by following the waste strategy we have in place.

**YOUR SUPPORT IN HELPING OUR CENTRE  
IMPROVE ITS ENVIRONMENTAL PERFORMANCE  
IS APPRECIATED.**



## RECYCLING REDUCES VOLUMES OF WASTE

Recycling reduces the volume of waste sent to landfill. With the world population nearing 8 billion and growing amounts of waste being produced, more precious land is being allocated for landfill sites. Landfill sites impact on eco-systems, emit methane gases which cause land and groundwater pollution.



## RECYCLING REDUCES MATERIAL CONSUMPTION AND USE OF NATURAL RESOURCES

One of the largest benefits of recycling is the ability to preserve more virgin materials for later use.

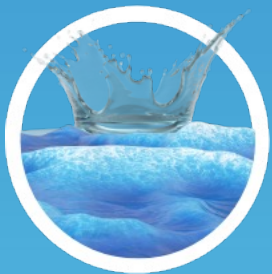
Recycling one ton of paper saves 19 trees and recycling one ton of plastic saves 2,000 pounds of oil. Recycling one ton of steel conserves 2,500 pounds of iron ore and 1,400 pounds of coal.



## RECYCLING REDUCES ENERGY CONSUMPTION

Massive amounts of energy are saved when using recycled materials to manufacture goods, compared to using virgin materials.

Recycling one aluminium beverage saves enough energy to run a 100-watt light bulb for 20 hours, a computer for 3 hours, or a TV for 2 hours.



## RECYCLING REDUCES WATER CONSUMPTION AND POLLUTION

Freshwater supply and quality is a major worldwide concern. Processing recycled versus virgin materials leads to reduced water consumption and less water pollution created during the manufacturing process.

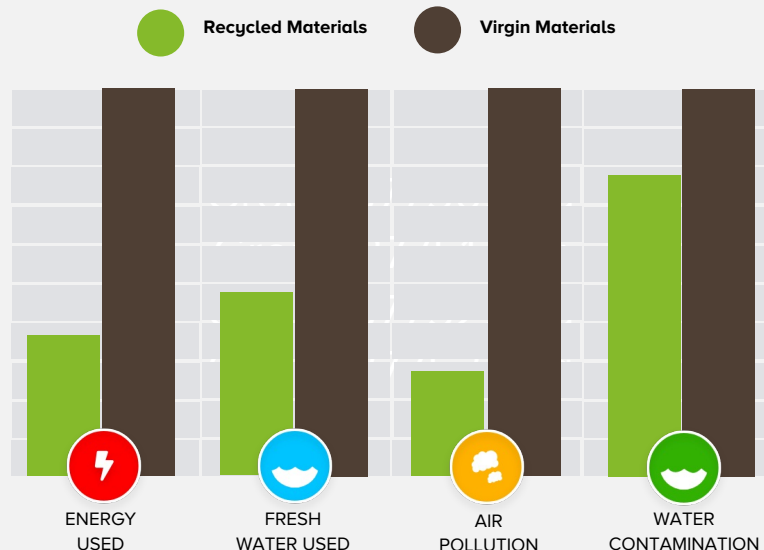
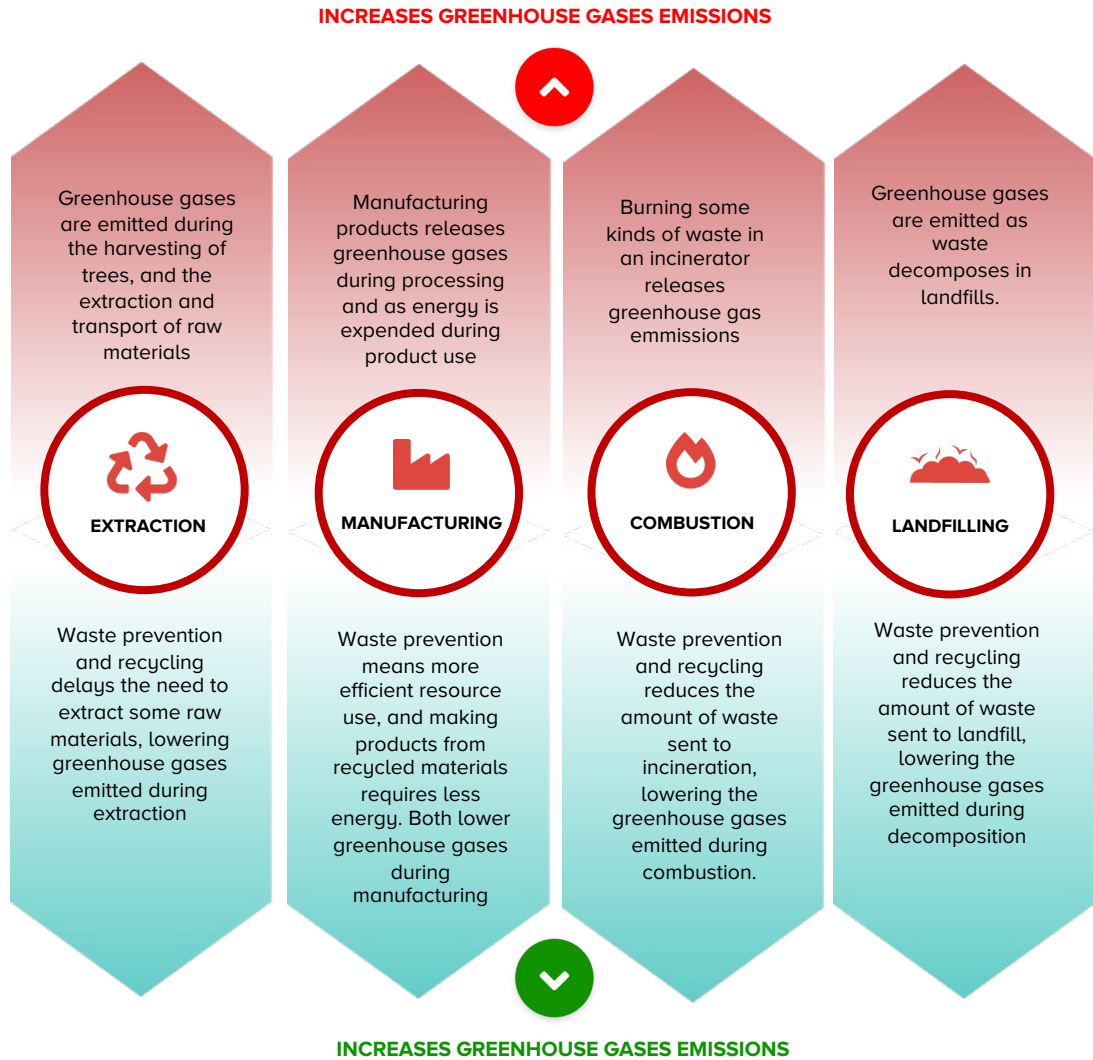
29 200 Litres of water is saved by recycling just one ton of paper versus making the paper from virgin material.



## RECYCLING REDUCES GREENHOUSE GAS EMISSIONS

Huge amounts of CO<sub>2</sub> are saved when material is recycled versus manufacturing the material from virgin inputs.

## THE DIAGRAM BELOW SHOWS THE LINK BETWEEN GREENHOUSE GASES THROUGH THE LIFECYCLE ANALYSIS OF THE MATERIAL







The United Nations Sustainable Development Goals (SDGs) are objectives directed towards a socially, economically and environmentally sustainable future. They aim to provide a shared blueprint for peace and prosperity for people and the planet, now and into the future.

BY FOLLOWING OUR  
RECYCLING PLAN, WE ARE  
FURTHER ALIGNING  
OURSELVES WITH  
THE SDGS.

12 RESPONSIBLE  
CONSUMPTION  
AND PRODUCTION



We will ensure environmentally sound management of our waste through our waste segregation and recycling efforts. We will follow the waste hierarchy to promote the circular economy.

13 CLIMATE  
ACTION



We will reduce our total greenhouse gas emissions through increased recycling and recovery, as well as decreased disposal volumes.

14 LIFE  
BELOW WATER



The effective segregation of waste will help to prevent and significantly reduce marine pollution by preventing waste from entering the ocean.

15 LIFE  
ON LAND



By recycling we are saving trees. This contributes to sustainable forest management and reducing deforestation.

As you can see, recycling and waste management activities drive sustainability and are essential to help solve climate change and other environmental challenges. Our combined efforts make a difference!

Please support our waste separation strategy so that together, we can improve even more.

**DONTWASTE**

recycle. save. comply. educate

[www.dontwastegroup.com](http://www.dontwastegroup.com)